

CALL FOR MORE INFORMATION



PROPERTY SNAPSHOT



**12,005**  
2022 POPULATION  
3 MILE RADIUS



**7,313**  
2022 DAYTIME POPULATION  
3 MILE RADIUS



**\$64,556**  
2022 AVERAGE INCOME  
3 MILE RADIUS



**9,289 VPD**  
E HIDALGO AVE

FOR SALE

Call for pricing

AVAILABLE SPACE

7,917 SF bldg on 0.63 AC

PROPERTY HIGHLIGHTS

- Located on lighted hard corner
- Near national retailers and restaurants
- Plenty of parking
- Great visibility
- On main thoroughfare to Port Mansfield, one of the most popular fishing locations in the area

TRAFFIC COUNT

E Hidalgo Ave: 9,289 VPD  
US Hwy 77: 5,340 VPD  
(SitesUSA 2020)

AREA TRAFFIC GENERATORS



Patricia Rodriguez  
[patricia@resolutre.com](mailto:patricia@resolutre.com)  
956.412.8800

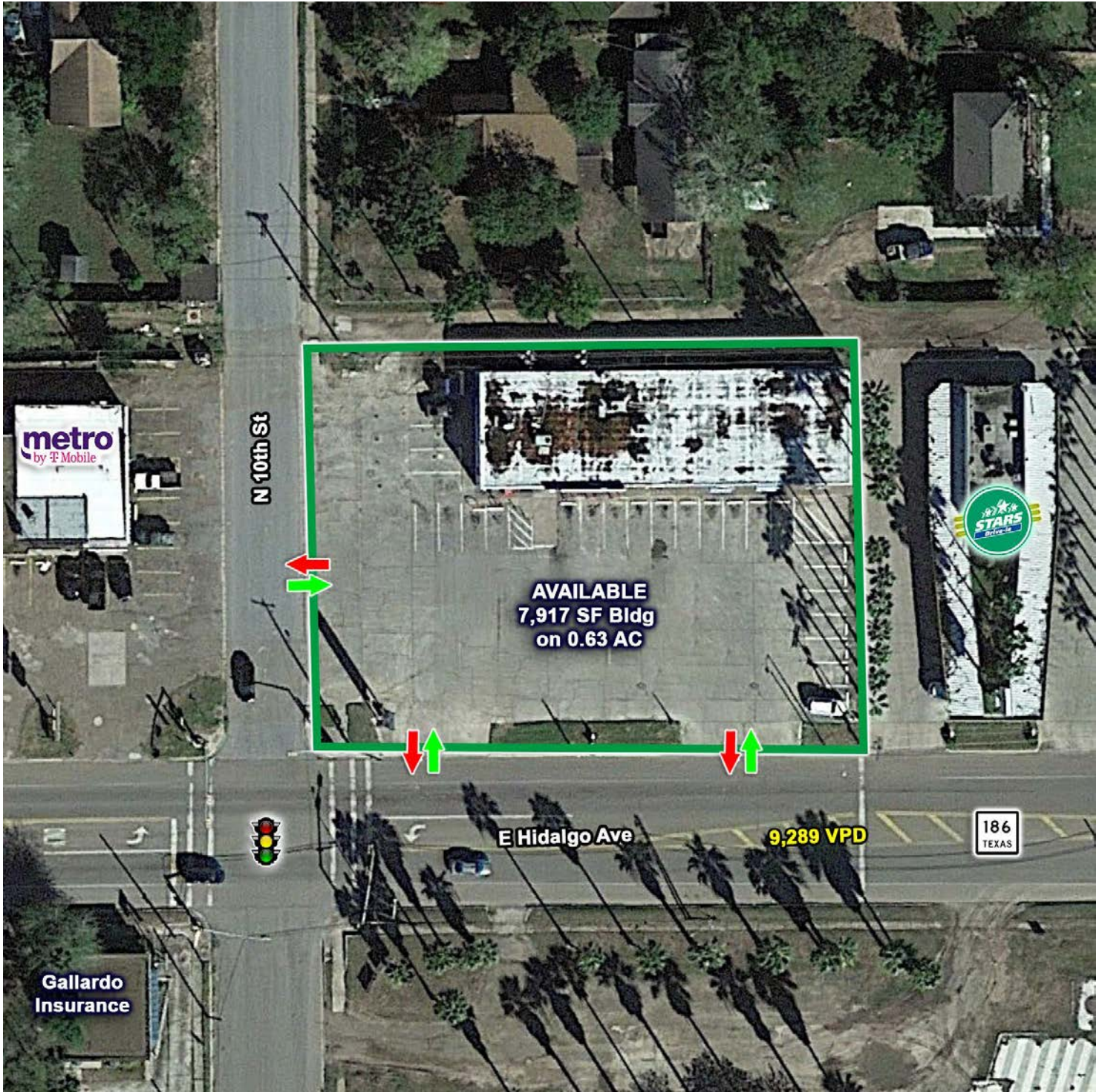
Joaquin Orozco  
[jorozco@resolutre.com](mailto:jorozco@resolutre.com)  
281.445.0033

[www.resolutre.com](http://www.resolutre.com)

The information contained herein was obtained from sources deemed reliable; however, RESOLUT RE makes no guaranties, warranties or representations to the completeness or accuracy thereof. The presentation of this real estate information is subject to errors; omissions; change of price; prior sale or lease; or withdrawal without notice. RESOLUT RE, which provides real estate brokerage services, is a division of Reliance Retail, LLC, a Texas Limited Liability Company.

# 423 E Hidalgo Ave

NEC E HIDALGO AVE & N 10TH ST  
423 E HIDALGO AVE | RAYMONDVILLE, TX 78580

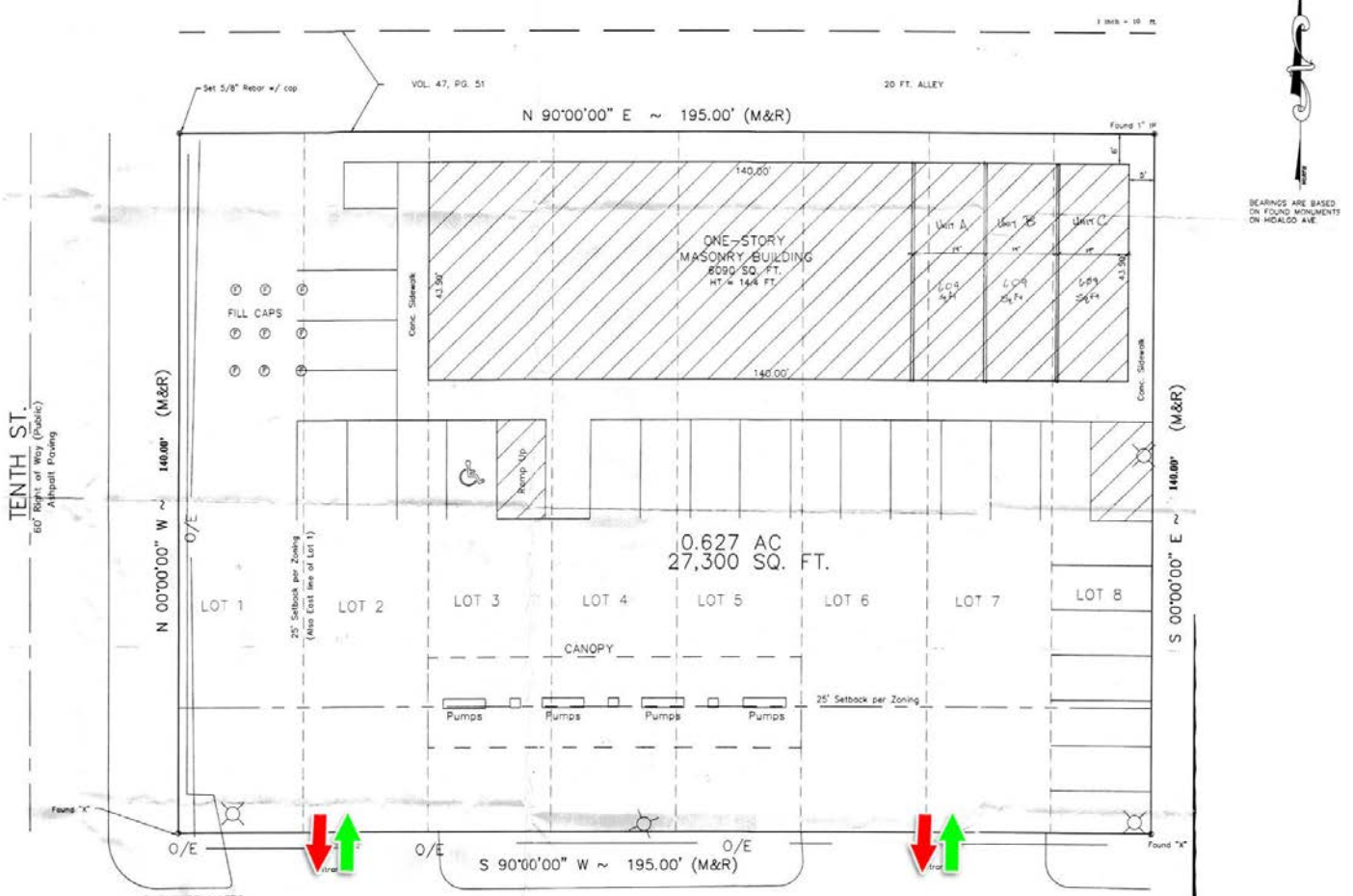


Patricia Rodriguez  
[patricia@resolutre.com](mailto:patricia@resolutre.com)  
956.412.8800

Joaquin Orozco  
[jorozco@resolutre.com](mailto:jorozco@resolutre.com)  
281.445.0033  
[www.resolutre.com](http://www.resolutre.com)



The information contained herein was obtained from sources deemed reliable; however, RESOLUT RE makes no guaranties, warranties or representations to the completeness or accuracy thereof. The presentation of this real estate information is subject to errors; omissions; change of price; prior sale or lease; or withdrawal without notice. RESOLUT RE, which provides real estate brokerage services, is a division of Reliance Retail, LLC, a Texas Limited Liability Company.

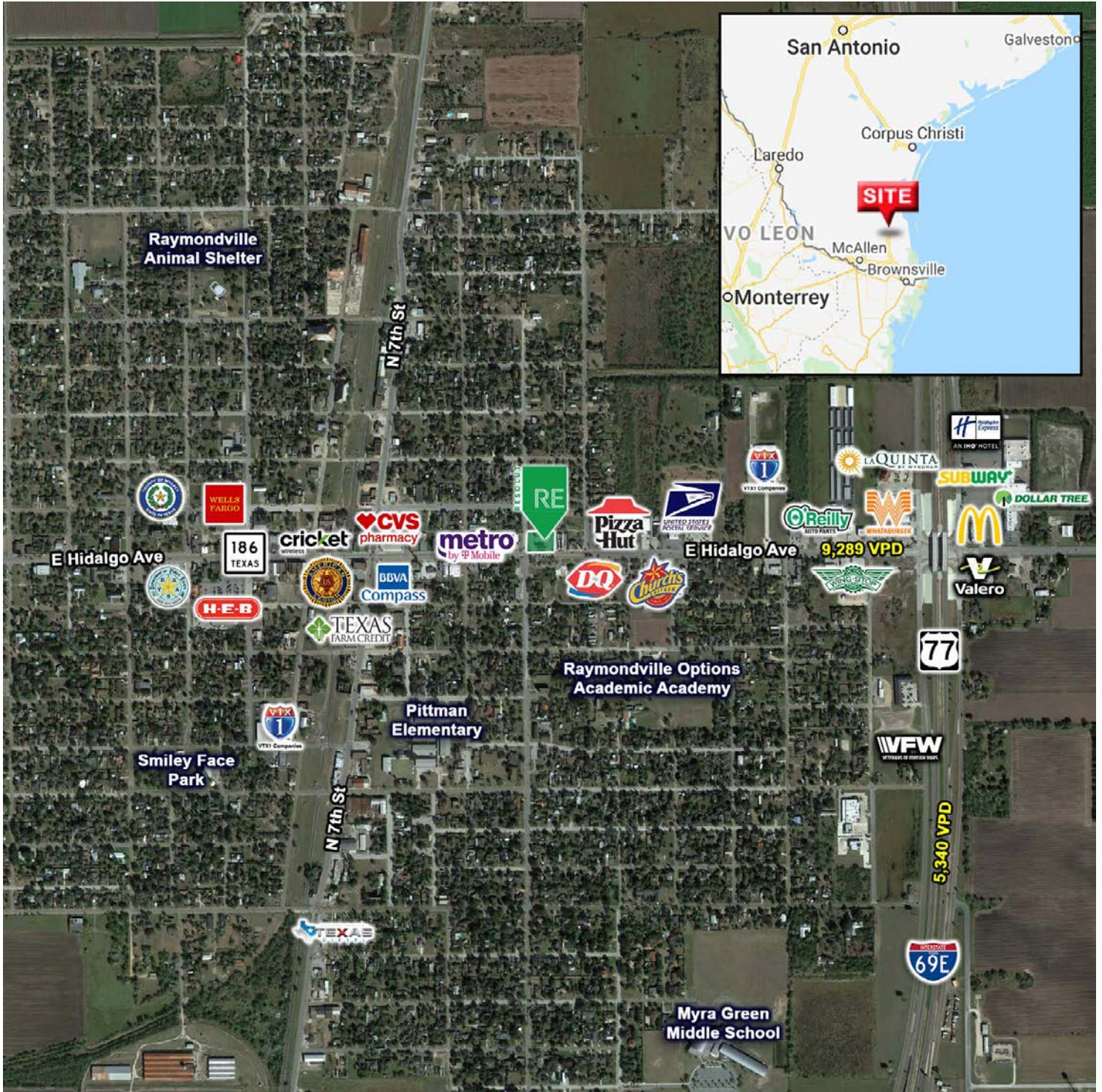


Patricia Rodriguez  
[patricia@resolutre.com](mailto:patricia@resolutre.com)  
956.412.8800

Joaquin Orozco  
[jorozco@resolutre.com](mailto:jorozco@resolutre.com)  
281.445.0033  
[www.resolutre.com](http://www.resolutre.com)



The information contained herein was obtained from sources deemed reliable; however, RESOLUT RE makes no guaranties, warranties or representations to the completeness or accuracy thereof. The presentation of this real estate information is subject to errors; omissions; change of price; prior sale or lease; or withdrawal without notice. RESOLUT RE, which provides real estate brokerage services, is a division of Reliance Retail, LLC, a Texas Limited Liability Company.



Patricia Rodriguez  
[patricia@resolutre.com](mailto:patricia@resolutre.com)  
956.412.8800

Joaquin Orozco  
[jorozco@resolutre.com](mailto:jorozco@resolutre.com)  
281.445.0033  
[www.resolutre.com](http://www.resolutre.com)



The information contained herein was obtained from sources deemed reliable; however, RESOLUT RE makes no guaranties, warranties or representations to the completeness or accuracy thereof. The presentation of this real estate information is subject to errors; omissions; change of price; prior sale or lease; or withdrawal without notice. RESOLUT RE, which provides real estate brokerage services, is a division of Reliance Retail, LLC, a Texas Limited Liability Company.

