



# WYOMING MALL

NEC WYOMING BLVD & MENAUL BLVD  
2210 - 2270 Wyoming Blvd NE, Albuquerque, NM 87112



**FOR LEASE**

**AVAILABLE SPACE**  
1,400 - 1,750 SF

**RATE**  
Call for pricing

**Austin Tidwell, CCIM**  
atidwell@resolutre.com  
505.337.0777

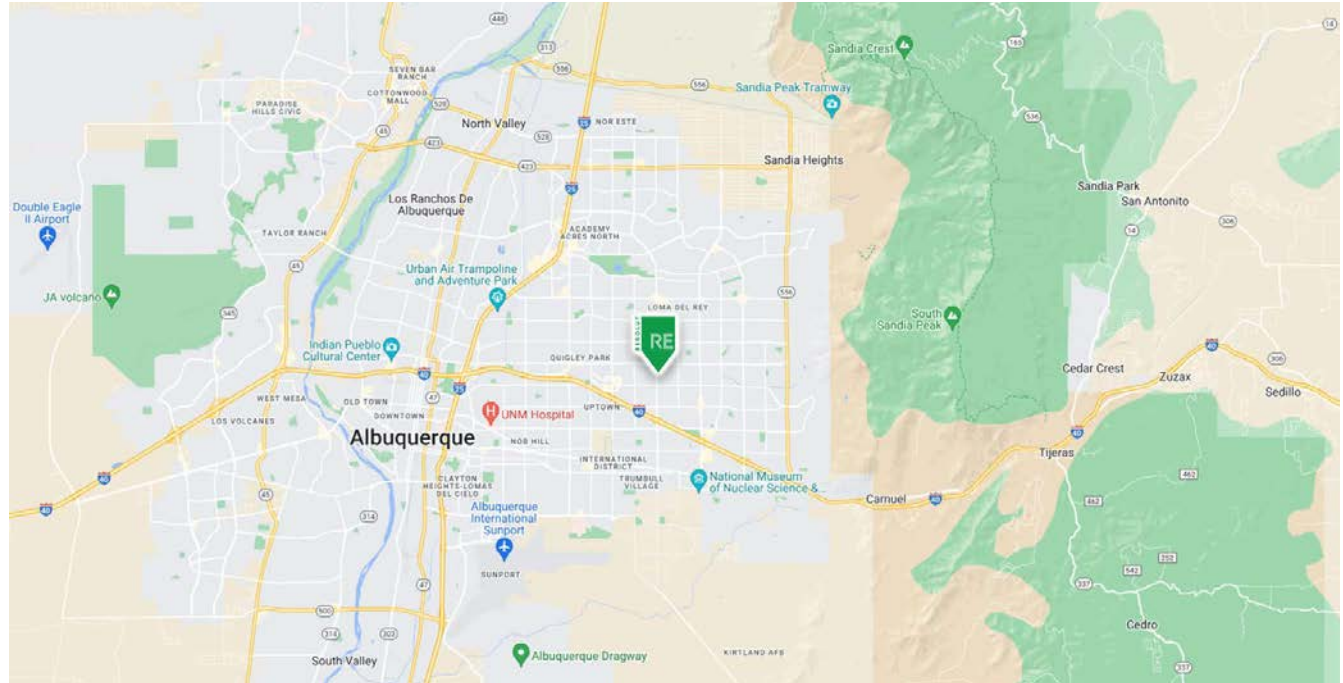
**Remsa Troy**  
rtroy@resolutre.com  
505.337.0777

The information contained herein was obtained from sources deemed reliable; however, RESOLUT RE makes no guaranties, warranties or representations to the completeness or accuracy thereof. The presentation of this real estate information is subject to errors; omissions; change of price; prior sale or lease; or withdrawal without notice. RESOLUT RE, which provides real estate brokerage services, is a division of Reliance Retail, LLC, a Texas Limited Liability Company.



**PROPERTY HIGHLIGHTS**

- Walmart Supercenter (\$45.5M annual sales) anchored center in the NE Heights
- 85th Percentile top visited shopping center in the United States (4th in NM)
- Join Albuquerque’s first Raising Cane’s, Starbucks, Chic-Fil-A, Krispy Kreme, Dollar Tree & More!
- Great second generation retail strip center space available
- Huge traffic counts on Wyoming Blvd and monument signage available



**AREA TRAFFIC GENERATORS**





**Austin Tidwell, CCIM**  
atidwell@resolutre.com | 505.337.0777


**Remsa Troy**  
rtroy@resolutre.com | 505.337.0777

**DEMOGRAPHIC SNAPSHOT 2024**

 **148,651**  
**POPULATION**  
3-MILE RADIUS

 **\$86,725.00**  
**AVG HH INCOME**  
3-MILE RADIUS

 **121,715**  
**DAYTIME POPULATION**  
3-MILE RADIUS

 **TRAFFIC COUNTS**  
Wyoming Blvd: 28,212 VPD  
Menaul Blvd: 23,579 VPD  
(Sites USA 2024)

## PROPERTY OVERVIEW

The Wyoming Mall is a Walmart Supercenter anchored shopping center in the heart of the Northeast Heights. Along with the strong customer draw of Walmart, the Wyoming Mall is home to Albuquerque's first Raising Cane's, Starbucks, Chic-Fil-A, Krispy Kreme and Dollar Tree. There are two great multi-tenant strip centers here that benefit from the Walmart customer base that feature beautiful stackstone facades, large storefront windows and a tenant mix that continue the draw to the center. One building has direct exposure to traffic on Wyoming Blvd and the other is located in-line and is a great opportunity to join the medical tenant lineup that has been started with the orthodontic and denture practices.

## LOCATION OVERVIEW

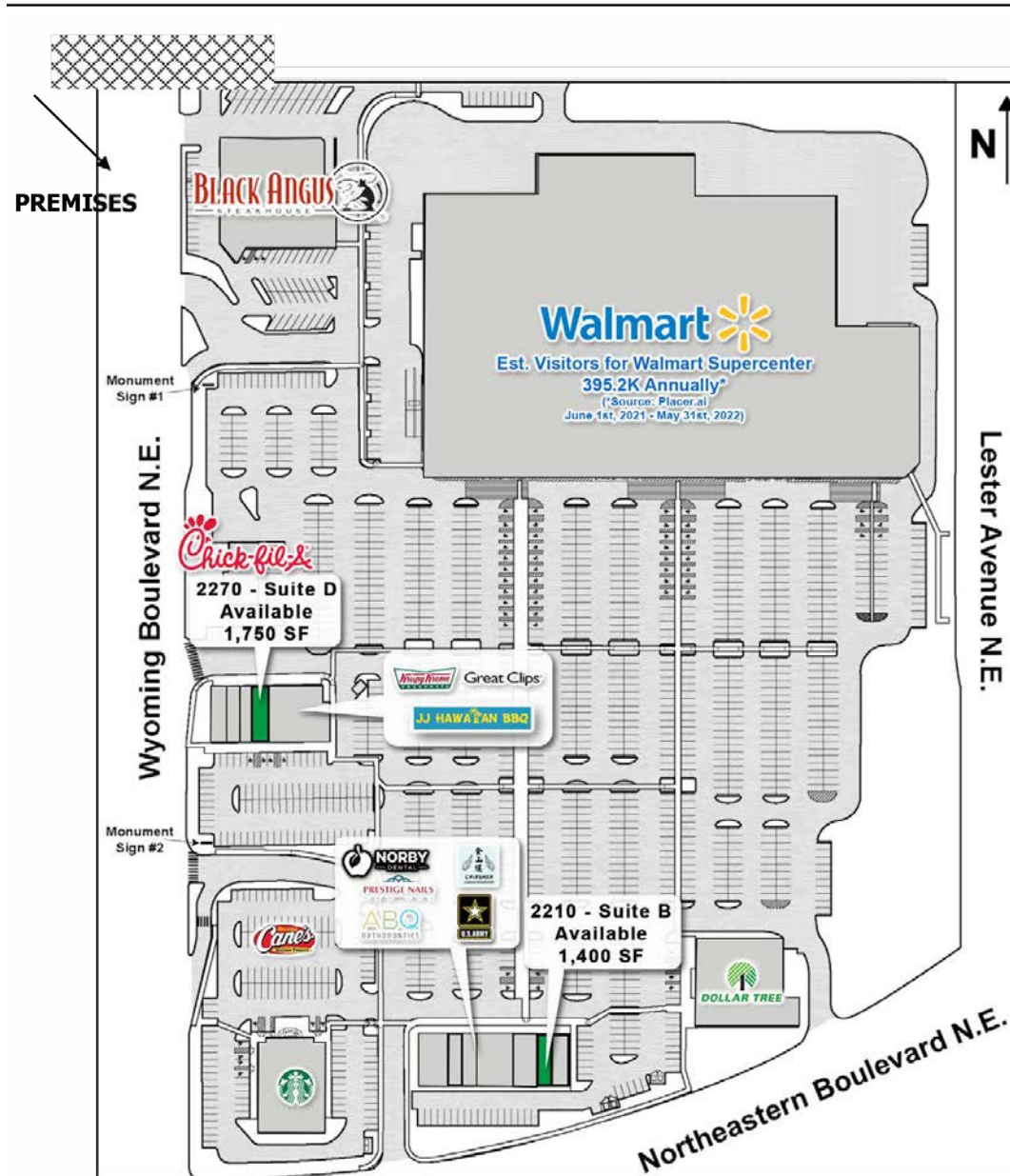
This center is surrounded by longtime residential neighborhoods with middle income families that have made Walmart a staple to their shopping needs. Within 3 miles, population density is 63,000 and average income sits at \$57,000. Wyoming Mall spans 28 acres on Wyoming Blvd between Indian School Rd and Menaul Blvd and is in a great location being a mile east of the the Uptown Submarket and a mile north of Interstate 40.

## PROPERTY OVERVIEW

Lease Rate:	Call for pricing
Available SF:	1,400 - 1,750 SF
Lease Structure:	NNN
Year Built:	2009
Zoning:	MX-M
Sub-Market:	NE Heights





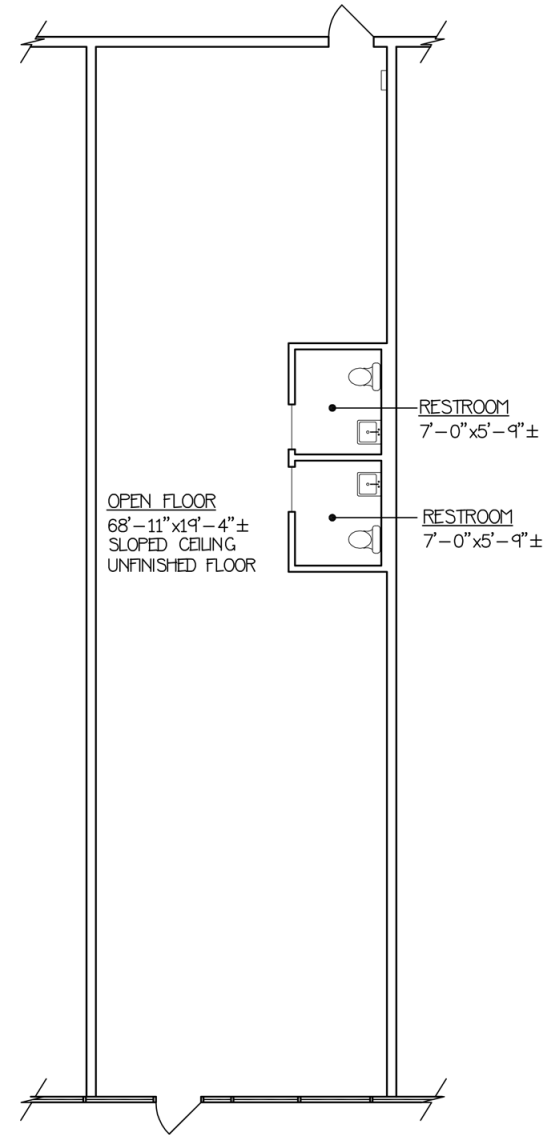


2210 WYOMING BLVD NE





2210 Suite B  
1,400 SF



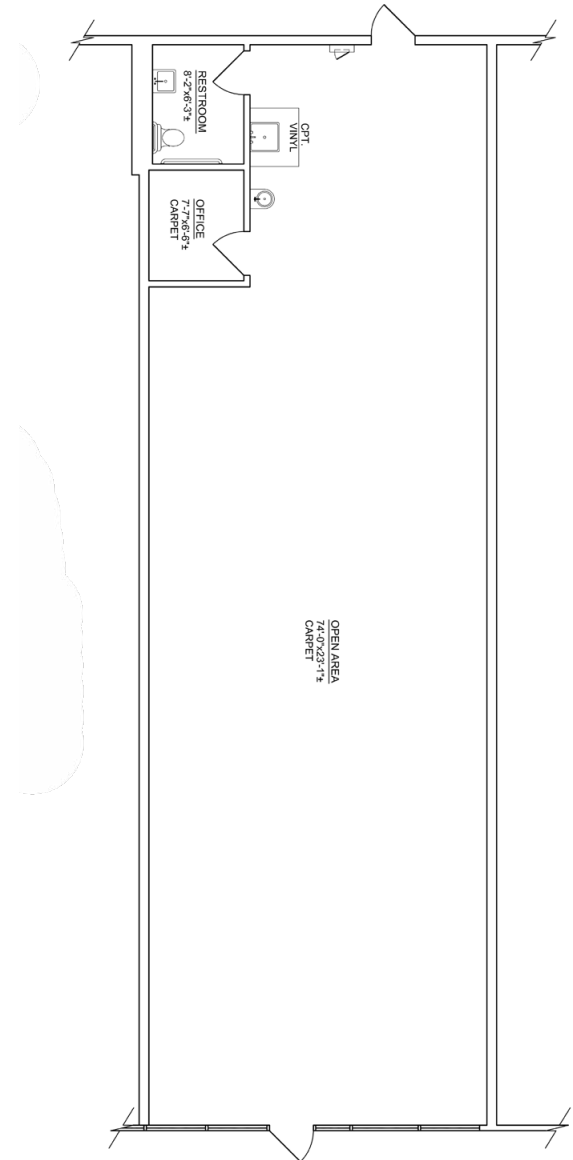
COVERED WALK

2270 WYOMING BLVD NE

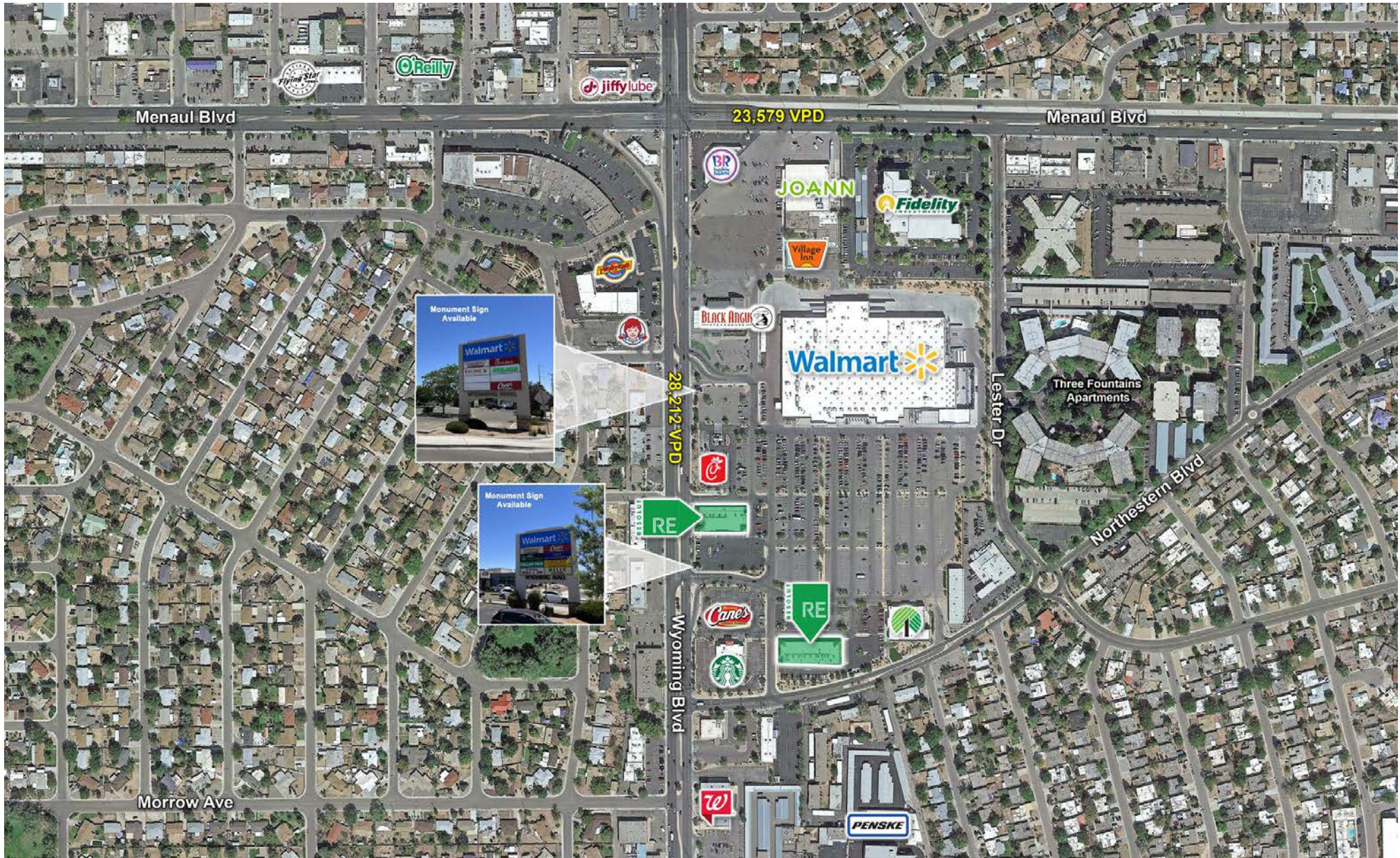




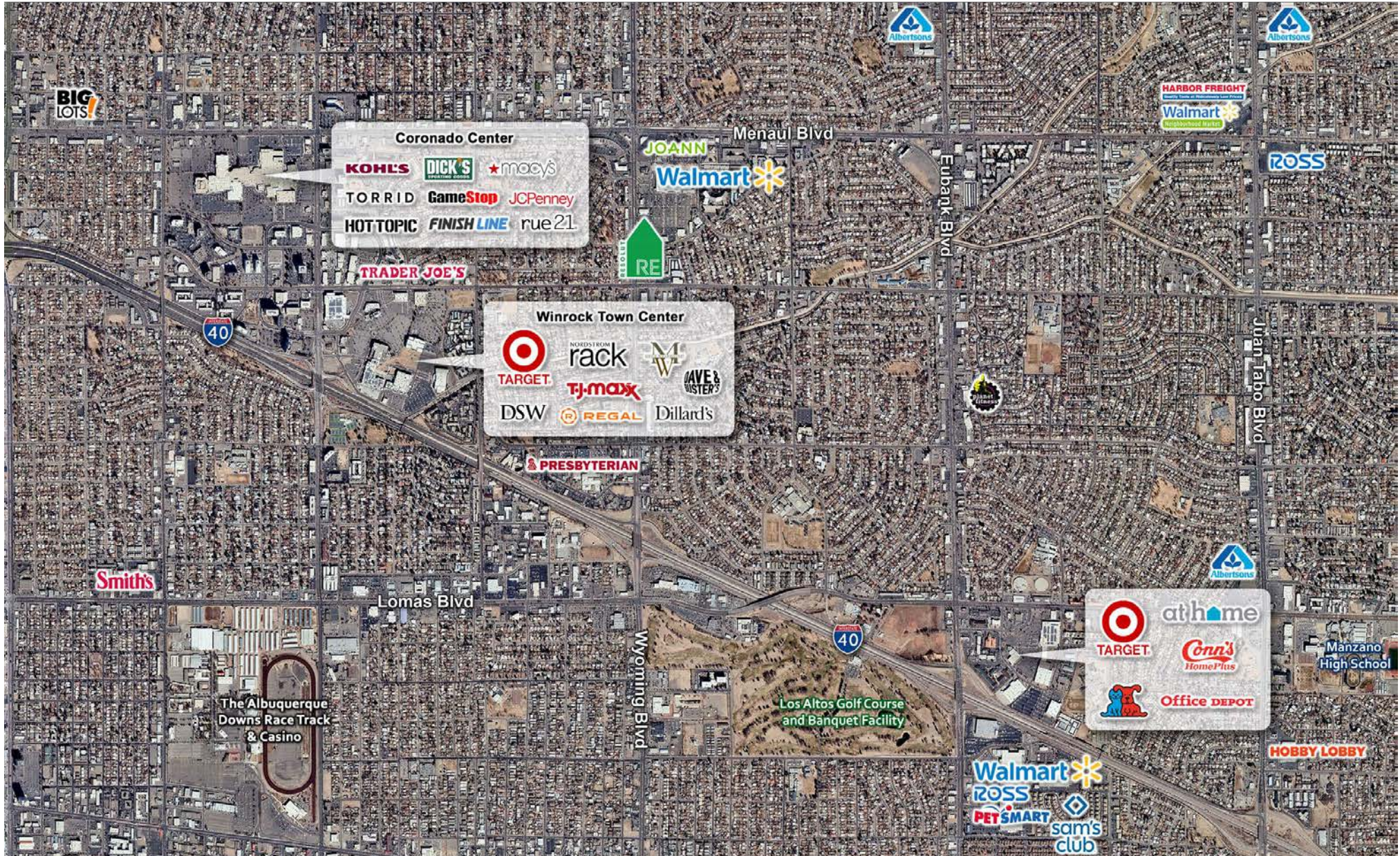
2270 Suite D  
1,750 SF













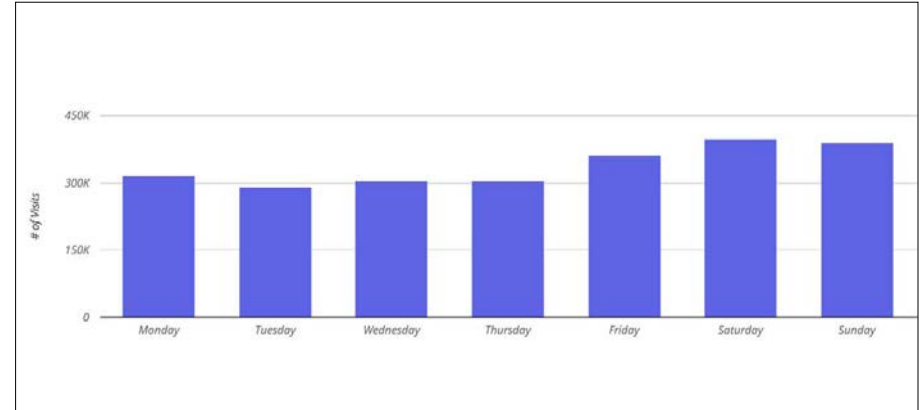
**METRICS**

	Visitors	Visits	Visits / sq.ft	Visit frequency
Walmart / Wyoming Blvd Ne	395.2K	2.37M	11.26	5.97

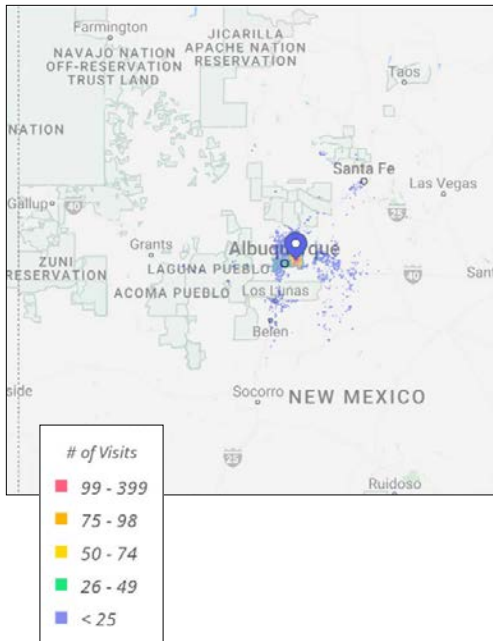
**RANKING OVERVIEW**



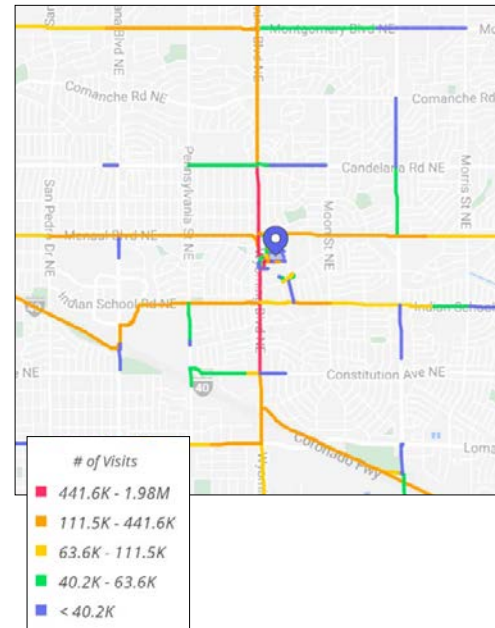
**DAILY VISITS**



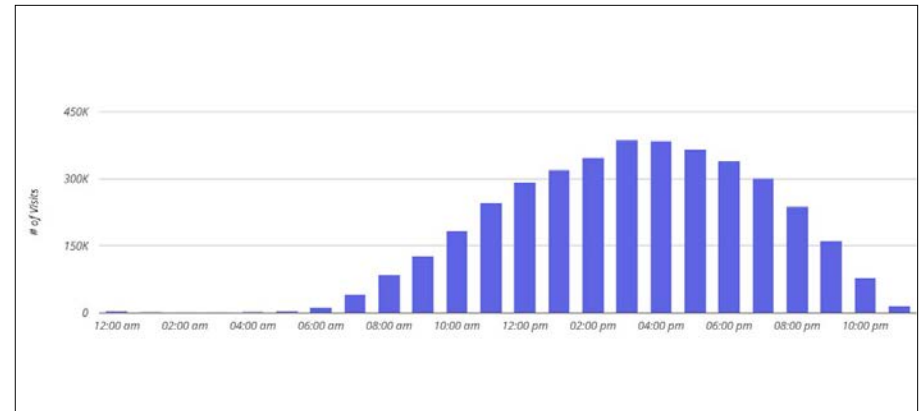
**TRADE AREA - HOME LOCATION**



**CUSTOMER JOURNEY ROUTES**



**HOURLY VISITS**



Jun 1, 2021 - May 31, 2022  
Data provided by Placer Labs Inc. (www.placer.ai)

