

CALL FOR MORE INFORMATION



SOLD

PROPERTY HIGHLIGHTS

- C2 Zoning
- .75 Acres
- Retail pad - ready for immediate development
- Located in prominent retail corridor
- Permitted drive access to NMSR 333

TRAFFIC COUNT

I-40: 18,827 VPD
(Sites USA 2023)
HWY 344: 9,120 VPD
(Sites USA 2023)

AREA TRAFFIC GENERATORS



PROPERTY SNAPSHOT



6,087
2023 POPULATION
3 MILE RADIUS



3,758
2023 DAYTIME POPULATION
3 MILE RADIUS



\$96,882
2023 AVERAGE INCOME
3 MILE RADIUS



18,827 VPD
I-40

The information contained herein was obtained from sources deemed reliable; however, RESOLUT RE makes no guaranties, warranties or representations to the completeness or accuracy thereof. The presentation of this real estate information is subject to errors; omissions; change of price; prior sale or lease; or withdrawal without notice. RESOLUT RE, which provides real estate brokerage services, is a division of Reliance Retail, LLC, a Texas Limited Liability Company.

Jeremy Salazar
jsalazar@resolutre.com
505.337.0777

Rob Powell, CCIM
rpowell@resolutre.com
505.337.0777

www.resolutre.com



Jeremy Salazar
jsalazar@resolutre.com
 505.337.0777

Rob Powell, CCIM
rpowell@resolutre.com
 505.337.0777
www.resolutre.com



The information contained herein was obtained from sources deemed reliable; however, RESOLUT RE makes no guaranties, warranties or representations to the completeness or accuracy thereof. The presentation of this real estate information is subject to errors; omissions; change of price; prior sale or lease; or withdrawal without notice. RESOLUT RE, which provides real estate brokerage services, is a division of Reliance Retail, LLC, a Texas Limited Liability Company.



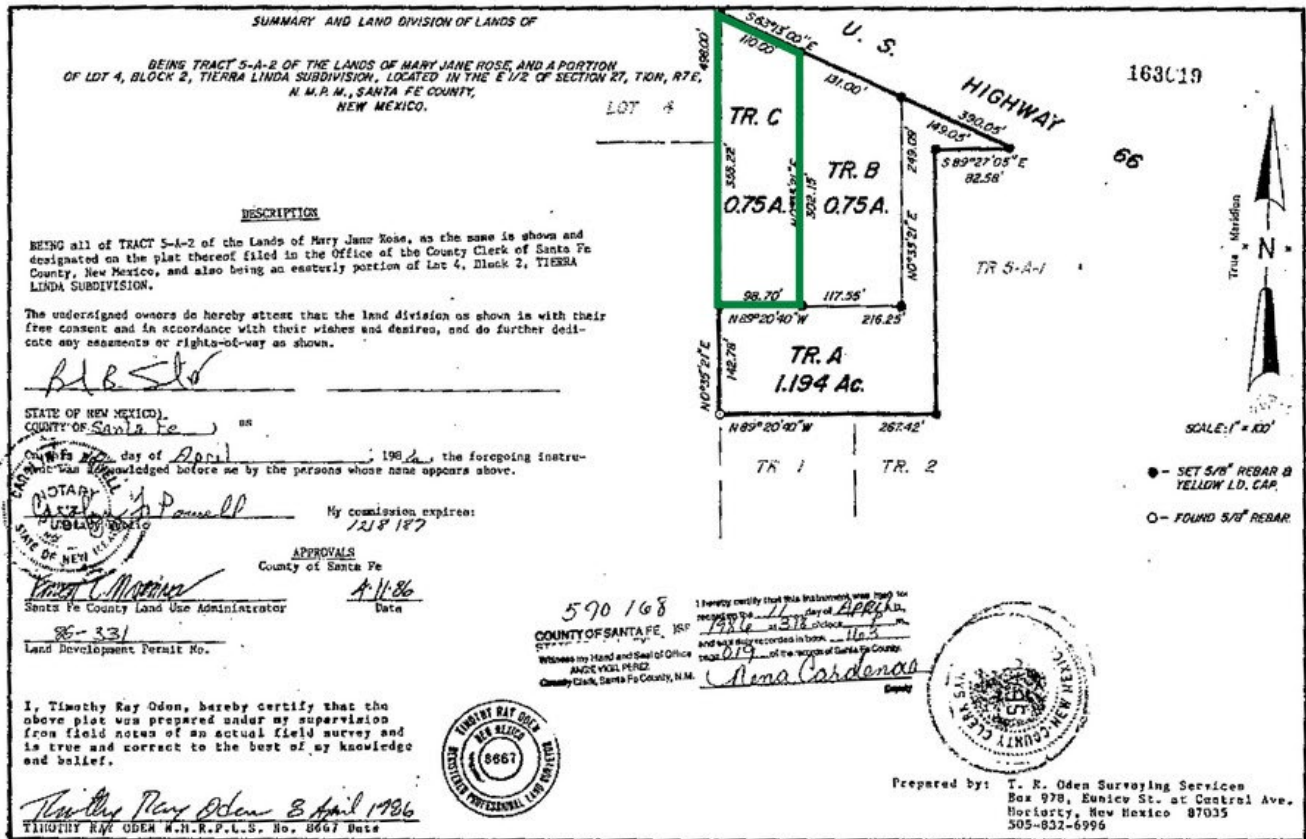
Jeremy Salazar
jsalazar@resolutre.com
505.337.0777

Rob Powell, CCIM
rpowell@resolutre.com
505.337.0777

www.resolutre.com



The information contained herein was obtained from sources deemed reliable; however, RESOLUT RE makes no guaranties, warranties or representations to the completeness or accuracy thereof. The presentation of this real estate information is subject to errors; omissions; change of price; prior sale or lease; or withdrawal without notice. RESOLUT RE, which provides real estate brokerage services, is a division of Reliance Retail, LLC, a Texas Limited Liability Company.



Jeremy Salazar
jsalazar@resolutre.com
505.337.0777

Rob Powell, CCIM
rpowell@resolutre.com
505.337.0777
www.resolutre.com



The information contained herein was obtained from sources deemed reliable; however, RESOLUT RE makes no guaranties, warranties or representations to the completeness or accuracy thereof. The presentation of this real estate information is subject to errors; omissions; change of price; prior sale or lease; or withdrawal without notice. RESOLUT RE, which provides real estate brokerage services, is a division of Reliance Retail, LLC, a Texas Limited Liability Company.



Jeremy Salazar
jsalazar@resolutre.com
505.337.0777

Rob Powell, CCIM
rpowell@resolutre.com
505.337.0777

www.resolutre.com



The information contained herein was obtained from sources deemed reliable; however, RESOLUT RE makes no guaranties, warranties or representations to the completeness or accuracy thereof. The presentation of this real estate information is subject to errors; omissions; change of price; prior sale or lease; or withdrawal without notice. RESOLUT RE, which provides real estate brokerage services, is a division of Reliance Retail, LLC, a Texas Limited Liability Company.