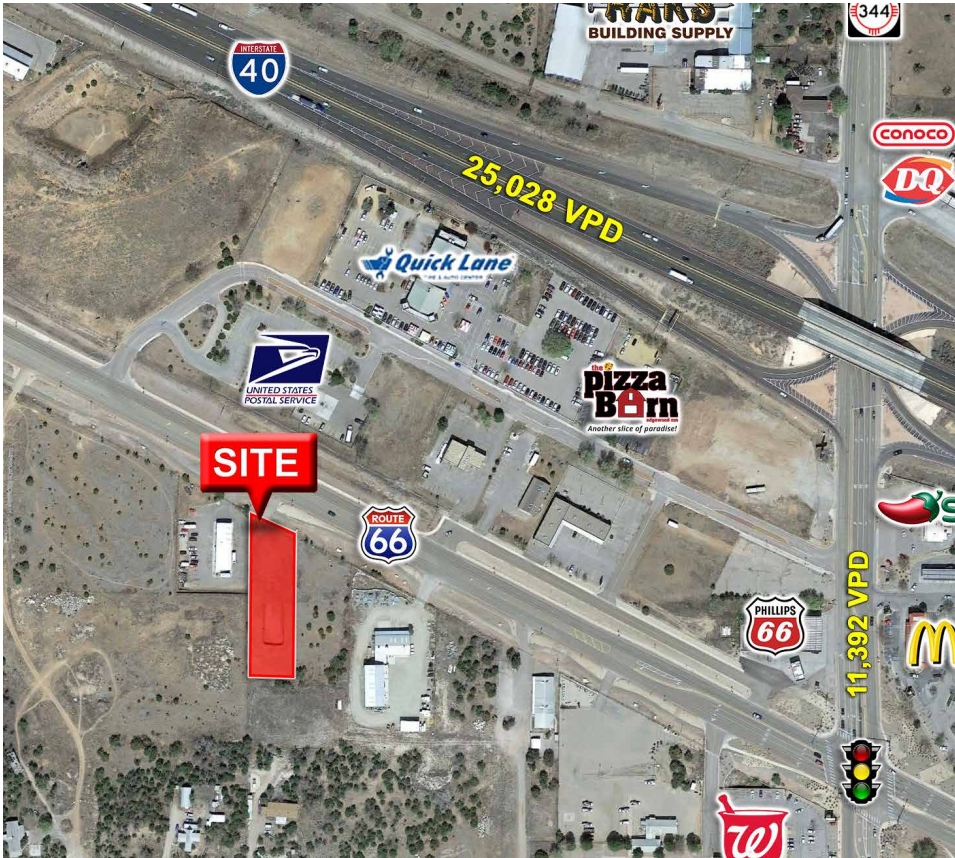


CALL FOR MORE INFORMATION



PROPERTY SNAPSHOT



7,329
2020 POPULATION
3 MILE RADIUS



2,534
2020 DAYTIME POPULATION
3 MILE RADIUS



\$80,639
2020 AVERAGE INCOME
3 MILE RADIUS



25,028 VPD
I-40

FOR SALE

\$185,000

AVAILABLE LAND

0.75 Acres

PROPERTY HIGHLIGHTS

- MX-H Zoning
- All utilities from Route 66
- .75 Acres
- Retail pad - ready for immediate development
- Located in prominent retail corridor
- Existing curb access to NMSR 333

TRAFFIC COUNT

I-40: 25,028 VPD
(STDB 2020)
HWY 344: 11,392 VPD
(STDB 2020)

AREA TRAFFIC GENERATORS



Austin Tidwell, CCIM
atidwell@resolutre.com
505.337.0777

Daniel Kearney
dkearney@resolutre.com

Rob Powell, CCIM
rpowell@resolutre.com

www.resolutre.com

The information contained herein was obtained from sources deemed reliable; however, RESOLUT RE makes no guaranties, warranties or representations to the completeness or accuracy thereof. The presentation of this real estate information is subject to errors; omissions; change of price; prior sale or lease; or withdrawal without notice. RESOLUT RE, which provides real estate brokerage services, is a division of Reliance Retail, LLC, a Texas Limited Liability Company.



Austin Tidwell, CCIM
atidwell@resolutre.com
505.337.0777

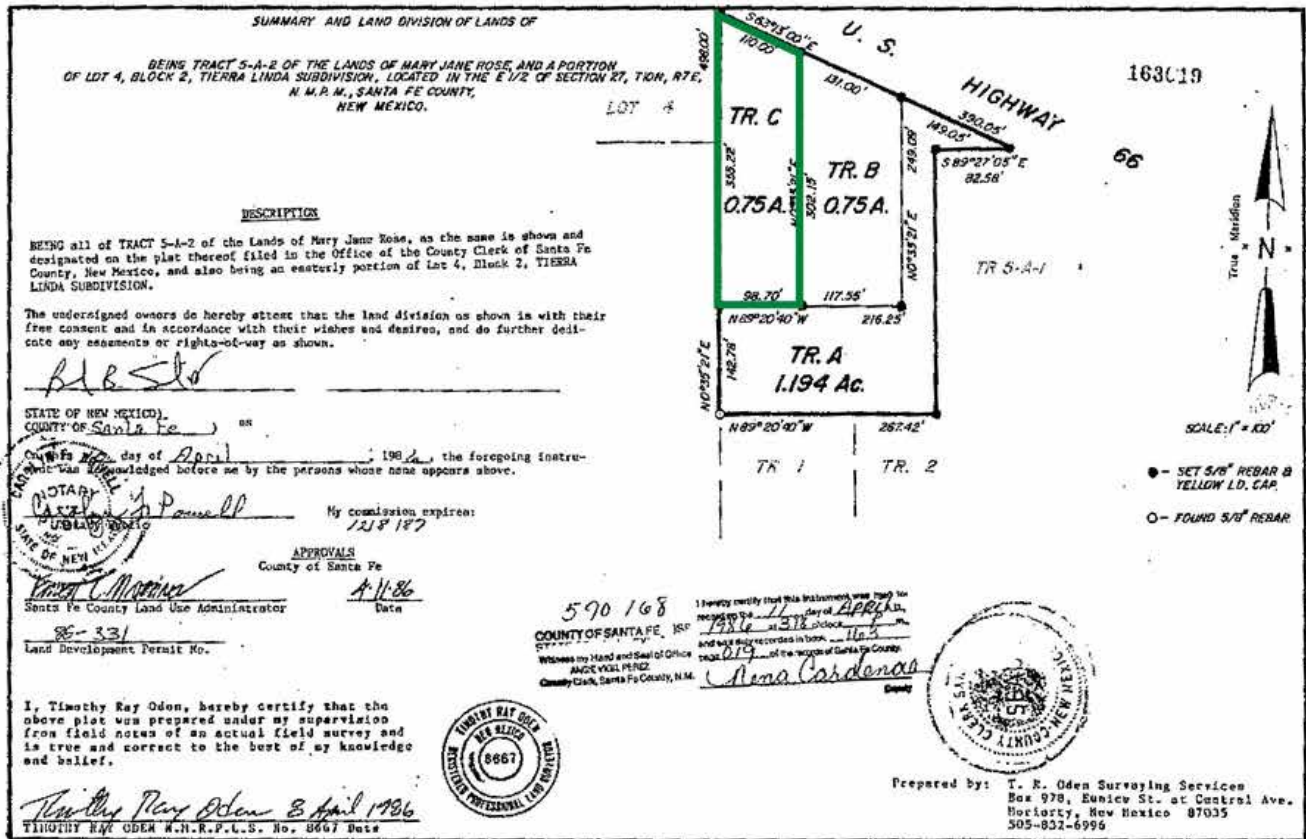
Daniel Kearney
dkearney@resolutre.com

Rob Powell, CCIM
rpowell@resolutre.com

www.resolutre.com



The information contained herein was obtained from sources deemed reliable; however, RESOLUT RE makes no guaranties, warranties or representations to the completeness or accuracy thereof. The presentation of this real estate information is subject to errors; omissions; change of price; prior sale or lease; or withdrawal without notice. RESOLUT RE, which provides real estate brokerage services, is a division of Reliance Retail, LLC, a Texas Limited Liability Company.



Austin Tidwell, CCIM
 atidwell@resolutre.com
 505.337.0777

Daniel Kearney
 dkearney@resolutre.com

Rob Powell, CCIM
 rpowell@resolutre.com
 www.resolutre.com



The information contained herein was obtained from sources deemed reliable; however, RESOLUT RE makes no guaranties, warranties or representations to the completeness or accuracy thereof. The presentation of this real estate information is subject to errors; omissions; change of price; prior sale or lease; or withdrawal without notice. RESOLUT RE, which provides real estate brokerage services, is a division of Reliance Retail, LLC, a Texas Limited Liability Company.



Austin Tidwell, CCIM
atidwell@resolutre.com
505.337.0777

Daniel Kearney
dkearney@resolutre.com

Rob Powell, CCIM
rpowell@resolutre.com
www.resolutre.com



The information contained herein was obtained from sources deemed reliable; however, RESOLUT RE makes no guaranties, warranties or representations to the completeness or accuracy thereof. The presentation of this real estate information is subject to errors; omissions; change of price; prior sale or lease; or withdrawal without notice. RESOLUT RE, which provides real estate brokerage services, is a division of Reliance Retail, LLC, a Texas Limited Liability Company.